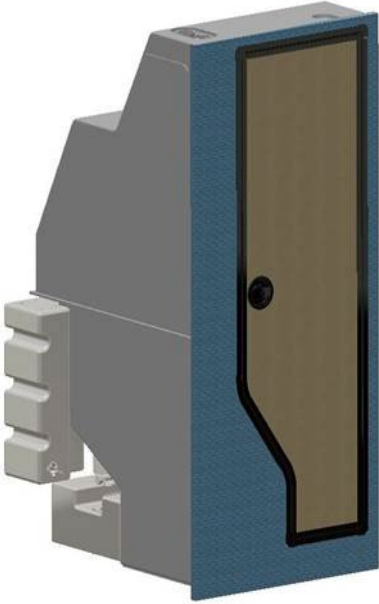




COLDLINE ST 325



SUTRAK A.Ş.

Coldline

SUTRAK Klima ve Soğutucu Cihazlar İmalat San. ve Tic. A.Ş.

Doğu Sanayi Sitesi 2.Blok No:4 34197 Yenibosna / İSTANBUL/TURKIYE - Phone : +90 212 503 90 57 / 58 - Fax : +90 212 503 89 81

www.sutrak.com.tr / info@sutrak.com.tr

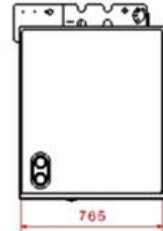
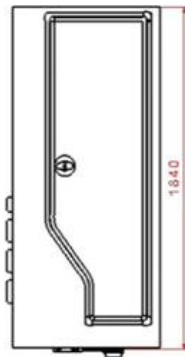
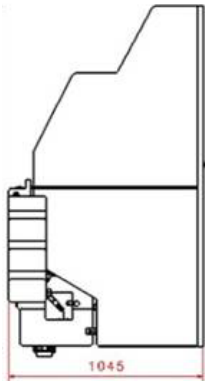
TECHNICAL DATA COLDLINE ST 325

MODEL: COLDLINE ST 325

DESIGNED & PRODUCED BY SÜTRAK A.Ş.

COLDLINE ST 325 (CENTER-DOOR)

FRESH WATER TANK CAPACITY	35 Lt
WASTE WATER TANK CAPACITY	30 Lt
MOTOR FLOW RATE	10,6 L/Min.
PNEUMATIC VALVES	2 Pcs
HANDWASH PUMP	Standard
SOAP DISPENSER	Standard
PAPER TISSUE DISPENSER	Standard
WEIGHT	110 Kg
OPERATING VOLTAGE	24 V DC - 27 V DC
WIDTH	765 mm
LENGTH	1045 mm
HEIGHT	1840 mm
FRESH WATER FLUSH (WF)	Standard
CHEMICAL FLUSH (CF)	Option
DUAL TYPE FLUSH (WF + CF)	Option



LIGHTWEIGHT



EFFICIENT



Coldline

www.sutrak.com.tr

SÜTRAK A.Ş.